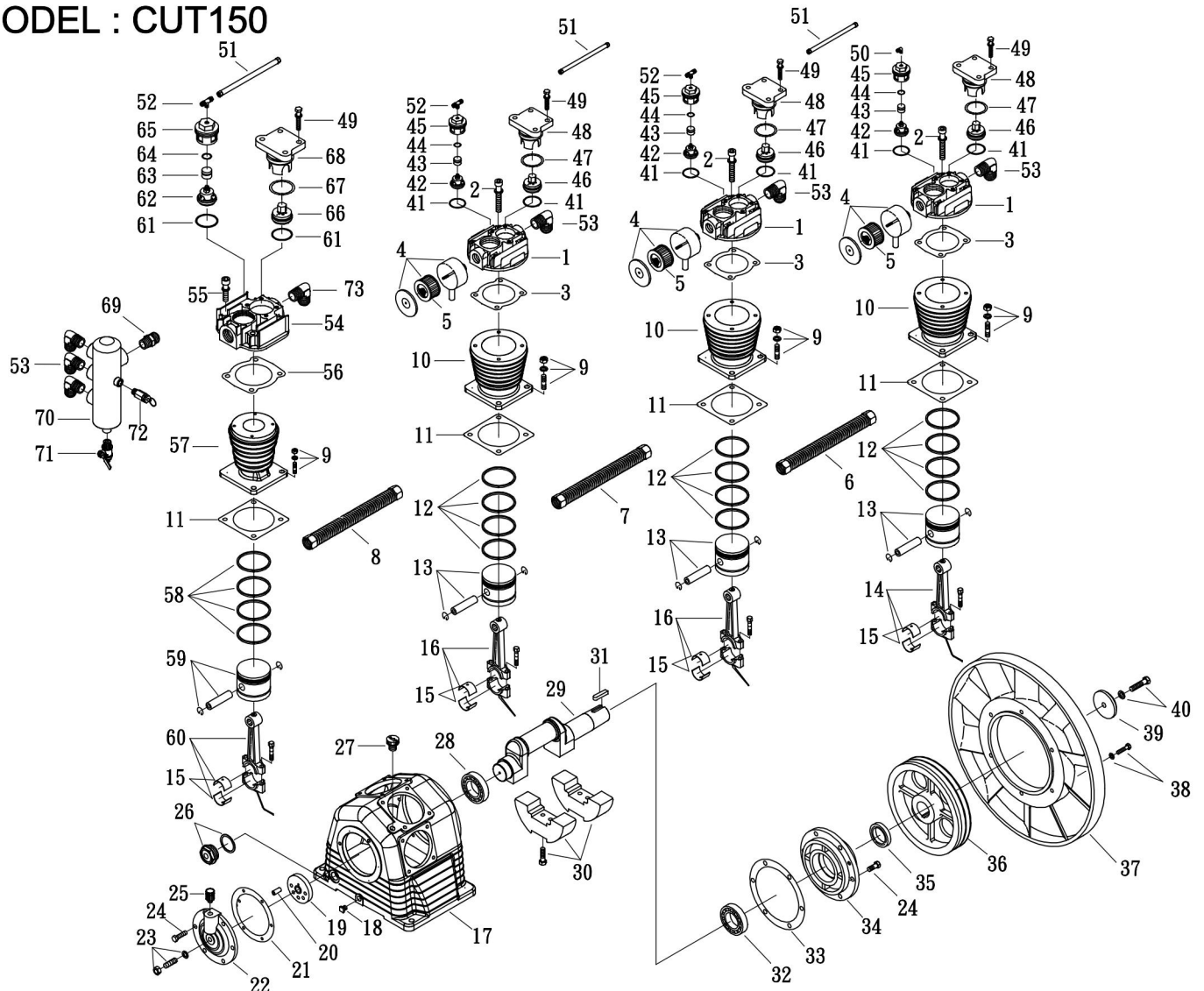


MODEL : CUT150



SPARE PARTS LIST

NO : MP-1910

REF. NO.	DESCRIPTION	PART NO.	QTY.	REF. NO.	DESCRIPTION	PART NO.	QTY.
1	Cylinder head	3101049	3	38	Hexagon bolt set	3B00-SM08*035AV	6
2	Allen bolt set	3B01-M12*065V	12	39	Plate washer	2B34-13*75*13	1
3	Cylinder head gasket	2G01-008C	3	40	Hexagon bolt set	3B00-SM12*050V	1
4	Air filter set	2140011	3	41	Inlet/Exhaust washer	2B31-002	6
5	Filter element	2142009	3	42	Inlet valve assembly	3B12-PU75	3
6	Exhaust tube set	3B2-06*930	1	43	Unloading piston	2113010	3
7	Exhaust tube set	3B2-06*750	1	44	O-ring	2N52-P21V	3
8	Exhaust tube set	3B2-06*570	1	45	Inlet valve holder	3110010	3
9	Double head screw set	3B11-003-A	16	46	Exhaust valve assembly	3B11-HL75	3
10	Cylinder	3201110	3	47	O-ring	2N52-G55V	3
11	Cylinder gasket	2G04-023	4	48	Exhaust press plate	3126005	3
12	Piston ring set	3B32-CK7595	3	49	Allen bolt set	3B00-SM08*030V	16
13	Piston set	3B31-CK7595	3	50	Unloading elbow	2N16-C01TW02M	1
14	Rod set	3B33-CKA581	1	51	Unloading tube set	3B2-02*395C	3
15	Rod bush(2 pieces)	2316008-B	4	52	Unloading 3-way pipe	2N17-CW0201TW2M	3
16	Rod set	3B33-CKA571	2	53	Exhaust elbow	2N06-06T06H	6
17	Crankcase	3301120	1	54	Cylinder head	3101050	1
18	Oil draining plug	2N33-003	1	55	Allen bolt set	3B01-M10*060V	4
19	Thrust block	3312007	1	56	Cylinder head gasket	2G01-007C	1
20	Pin	2N41-003	1	57	Cylinder	3201112	1
21	Front bearing seat gasket	2G05-009	1	58	Piston ring set	3B32-CK5080	1
22	Front bearing seat	3309012	1	59	Piston set	3B31-CTA580	1
23	Bolt set	3B07-SM16*40-A	1	60	Rod set	3B33-CTA581	1
24	Hexagon bolt	2B00-SM10*025	12	61	Inlet/Exhaust washer	2B31-001	2
25	Breathing cover	2321008	1	62	Inlet valve assembly	3B12-PU23	1
26	Oil sight gauge set	2303016A	1	63	Unloading piston	2113009	1
27	Oil filling plug set	2319004B	1	64	O-Ring	2N52-P18V	1
28	Bearing	2N35-32209	1	65	Inlet valve assembly	3110008	1
29	Crankshaft & balancer	3304099	1	66	Exhaust valva assembly	3B11-NPP23	1
30	Balancer set	3304058-A	1	67	O-ring	2N52-G45V	1
31	Pulley key	2N47-10*8*40	1	68	Exhaust press plate	3126004	1
32	Bearing	2N35-32210	1	69	Nipple	2N01-10T10T	1
33	Rear bearing seat gasket	2G06-015	1	70	Spare tank	3125011	1
34	Rear bearing seat	3311024	1	71	Ball valve	2413010	1
35	Oil seal	2N50-TC50*72*12	1	72	Pressure relief valve	2406020A	1
36	Pulley	3PBF-115B350	1	73	Exhaust elbow	2N06-10T10H	1
37	Fly wheel	3PBF-516*228	1				